

INSTRUCTION MANUAL 使用说明书

KM-T2000 4WD

1/5th SCALE RACING CAR



KING MOTOR RACING

Thank you

Thank you for selecting the KM Racing T2000 4WD. This kit designing is base on T1000 and uses top quality parts for durability and performance. The instruction manual you are reading was designed to be easy to follow yet thorough in its explanations. KM Racing wants you to enjoy driving our new Racing buggy. If you come across any problems or need some help getting through a step, give us a call and we will do our best to help you.

- This is a high performance R/C kit, and it requires regular maintenance for best performance. If you don't do regular maintenance the performance will suffer. KM Racing has all the necessary parts and accessories available to keep your car performing at its best.

The caution or attention symbols will warn you about steps that can be very dangerous. Please read and understand the instructions carefully before proceeding.



Cautions

Failure to follow these instructions can damage your kit, and cause serious bodily injury or death.



Attention

Failure to follow these instructions can cause injury to yourself or others. You might also cause property damage or damage your kit.



Cautions

If you make changes or adjustments not shown in the instruction manual, your vehicle may be damaged.

To prevent any serious personal injury and/or damage to property, please be responsible when operating all remote controlled models. Extra attention is called for when operating any glow fuel powered model. These models can exceed speeds of 40 m.p.h. and use highly poisonous and flammable fuels.

- Before Running** ● Please read manual (with parent, guardian or a responsible adult if necessary).
- While Operating** ● Please do not run on a public street, this could cause serious accidents, personal injuries and/or property damage.
- Please do not run near pedestrians or small children.
- Please do not run in small or confined areas.
- Before Operating** ● Make sure that all screws and nuts are properly tightened.
- Always use fresh batteries for your transmitter and receiver to avoid losing control of the model.
- Make sure no one else is using the same radio frequency as you are using.
- Please confirm the neutral throttle position.
- After Running** ● Shut off engine first, then turn off receiver switch and turn off transmitter last.
- After running 4WD Bigfoot Truck, it is necessary to perform routine maintenance.
- Failure to do this can result in increased wear and damage to the engine and chassis.

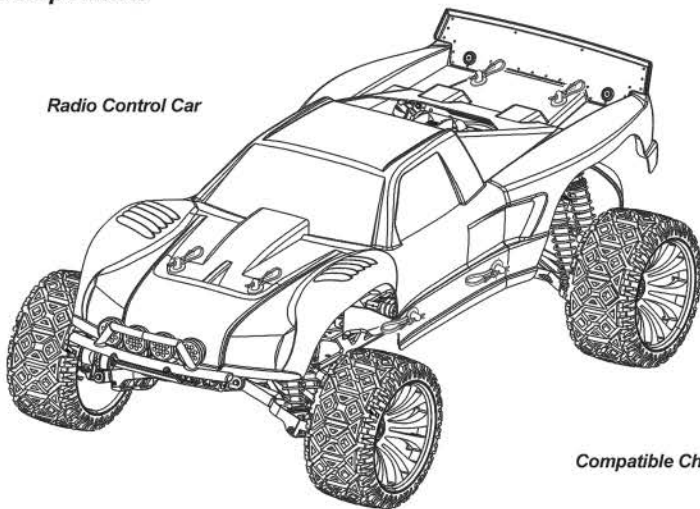
Safety Guidelines When Operating Gasoline Engines



- This product uses a mixture of gasoline and two cycle oil for fuel. Please use extreme caution when handling gasoline.
- Do not run near open flames or smoke while running your model or while handling fuel.
- Always store fuel in a well ventilated place, away from heating devices, open flames, direct sunlight, or batteries.
- Gasoline is flammable and poisonous. Gasoline powered model engines emit poisonous vapors. These vapors irritate eyes and can be highly dangerous to your health.
- You must only use a mixture of gasoline and two cycle oil as fuel for this engine. Never use glow fuels intended for R/C cars.
- Be aware that some parts will be hot after operation. Do not touch the exhaust or the engine until they have cooled.
- After running, please empty the fuel tank before storing the car.
- Keep fuel away from children.
- Store in a well ventilated area.

Components

Radio Control Car



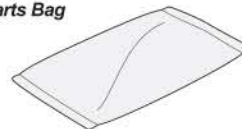
2.4G Transmitter Sender



Compatible Charger



Parts Bag



Instruction Bag

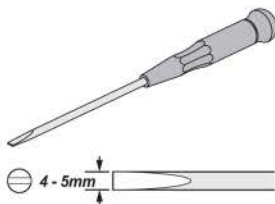


B121 Antenna pipe



Equipment Needed

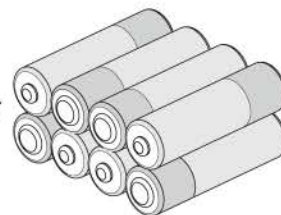
Screwdriver



Batteries for transmitter

SC4800mAh Nickel Hydrid Battery

8x

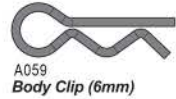
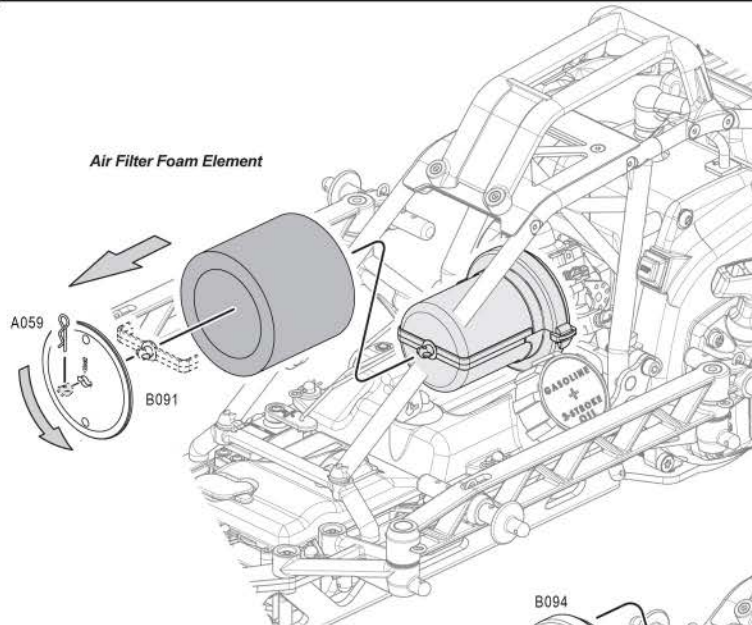


2-1 Air Filter Maintenance

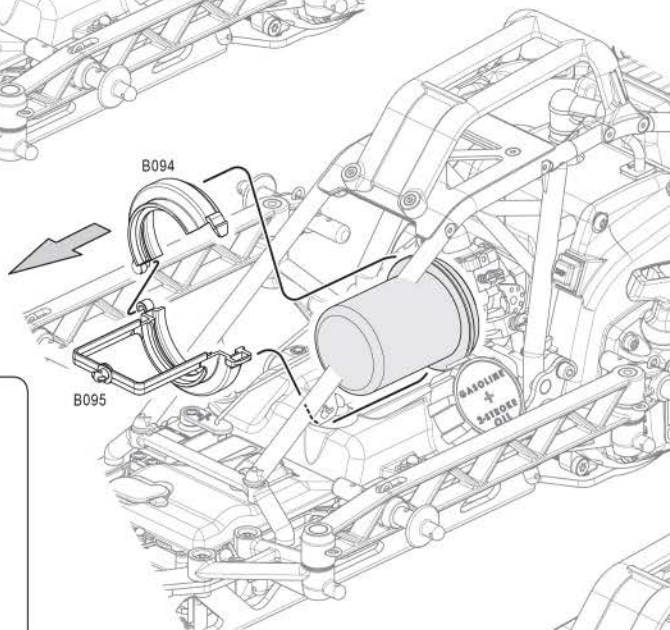
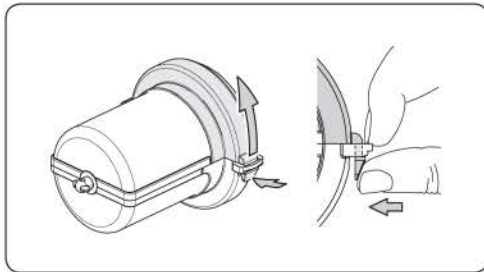
Dirt is the biggest enemy of a nitro engine. Proper air filter maintenance is one of most important factors that will affect your engines longevity. We recommend cleaning the element after every run. It is always a good habit to check the element after every run to make sure it is properly seated in the filter body and that the body is fully seated on the carburetor. Never run the engine without the air filter.

Remove Air Filter Element

1

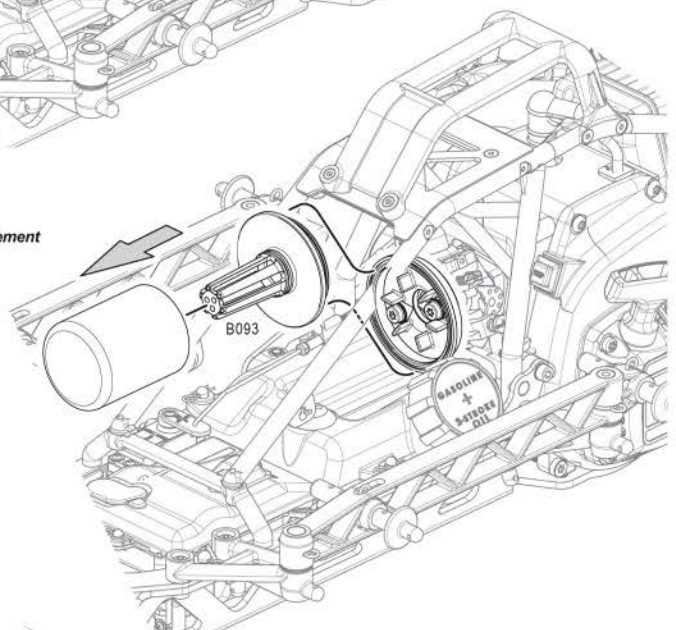


2

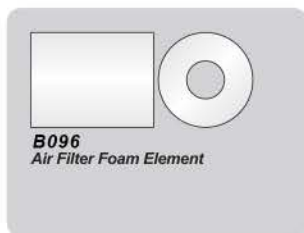


3

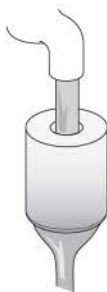
Air Filter Foam Element



Cleaning the Filter Element



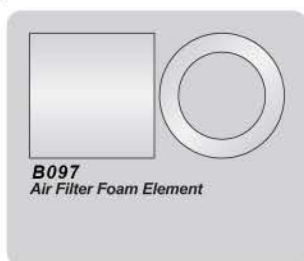
1



2



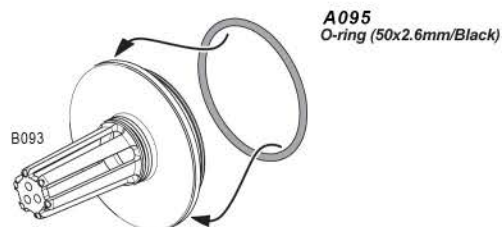
Clean with soap and water. Be sure to rinse from inside filter to outside. after drying reapply air filter oil. To re-coat the air filter with oil, place the element in a plastic bag with several drops of air filter oil. Using your fingers, work the oil into the element making sure it is evenly distributed.



Remove dust and clean with soap and water. Reinstall after drying.

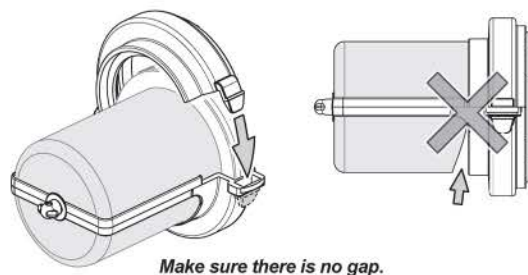
O-ring replacement

Replace, if O-ring is cracked or dry.



Reinstalling the Filter Element

When installing inner filter element, make sure there is no gap.



Installation is reverse of removal.

1 The transmitter button description



- ① 2.4G ANT ② STEERING WHEEL ③ CH3 ④ BAT BOX
- ⑤ D/R ⑥ Ch3 TRIM ⑦ POWER



The transmitter parameters:

- 1.Channels: 3channels;
- 2.Model type: car/boat;
- 3.RF power: no more than 10mW;
- 4.Modulation: GFSK;
- 5.System type: AFHDS;
- 6.Sensitivity: 1024;
- 7.Low voltage warning: yes(less than 9.5V);
- 8.DSC port: yes(3.5mm);
- 9.Charger port: yes;
- 10.Power: 12VDC(1.5V×8);
- 11.Weight: 395g;
- 12.ANT length: 26mm;
- 13.Size: 154×127×270mm;
- 14.Color: black;
- 15.Certificate: CE(0678) FCC.

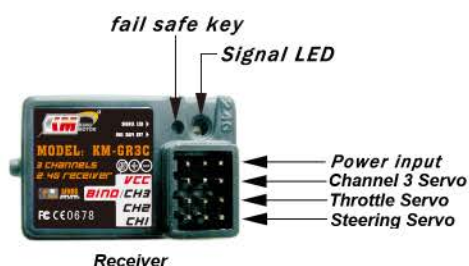
- ⑧ DSC FOR SIMULATE
- ⑨ CHARGER
- ⑩ THROTTLE TRIGGER

2 The transmitter button description



- 11 LCD 12 BACK 13 BIND 14 END 15 ENTER (RIGHT/LEFT)
 16 TH TRIM (DOWN) 17 TH TRIM (UP) 18 ST TRIM (LEFT) 19 ST TRIM (RIGHT)

3 The receiver shows



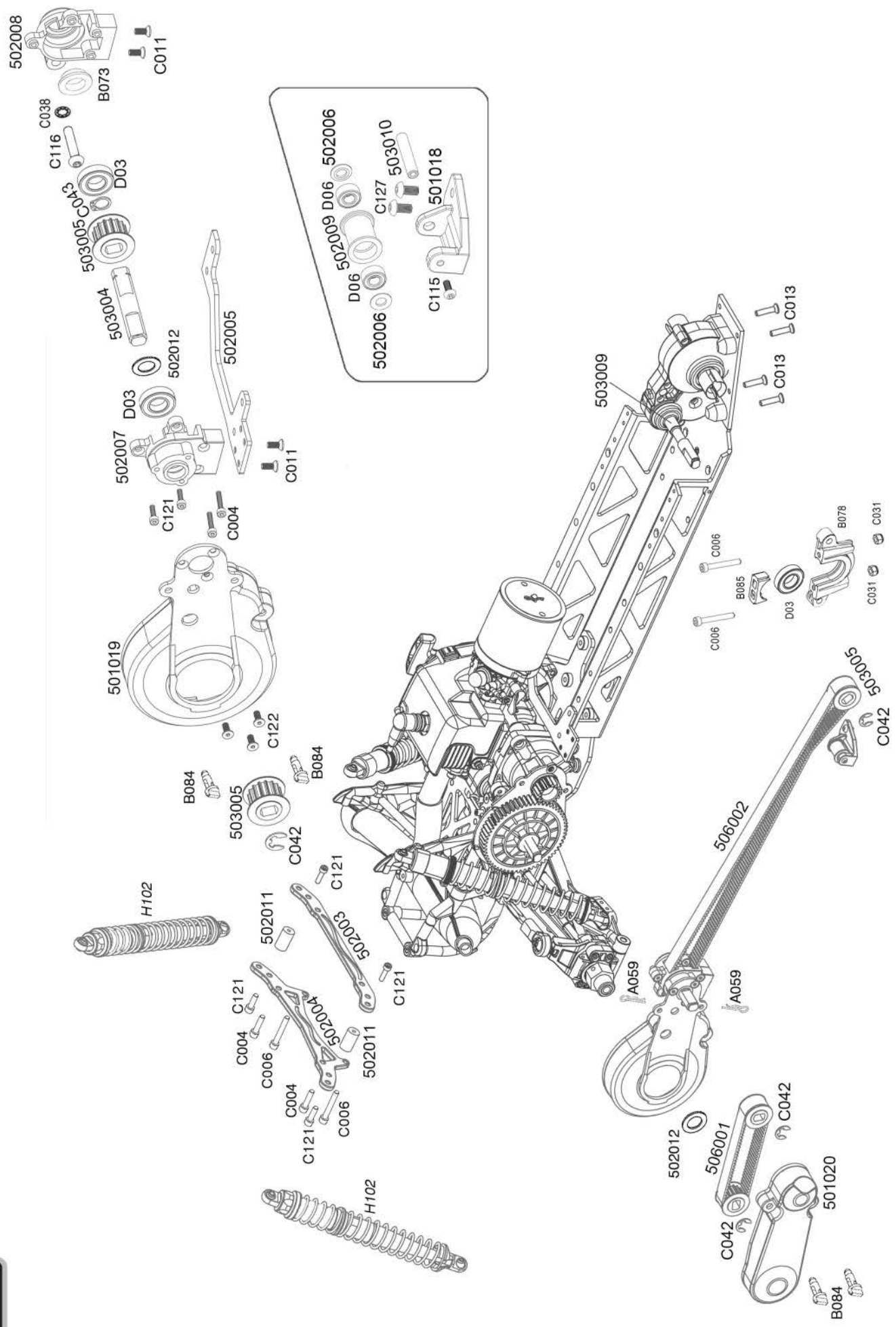
RECEIVER PARAMETERS:

- 1.Channels: 3channels;
- 2.Model type: car/boat;
- 3.RF receiver sensitivity: -105dbm;
- 4.Modulation: GFSK;
- 5.System type: AFHDS;
- 6.Sensitivity: 1024;
- 7.Failsafe: yes(channel 2);
- 8.Bind port: yes(channel 3);
- 9.Power port: yes(VCC);
- 10.Power: 4.5-6.5VDC(1.5V×4);
- 11.Weight: 5g;
- 12.ANT length: 26mm;
- 13.Size: 37.6×22.3×13mm;
- 14.Color: black;
- 15.Certificate: CE(0678) FCC.

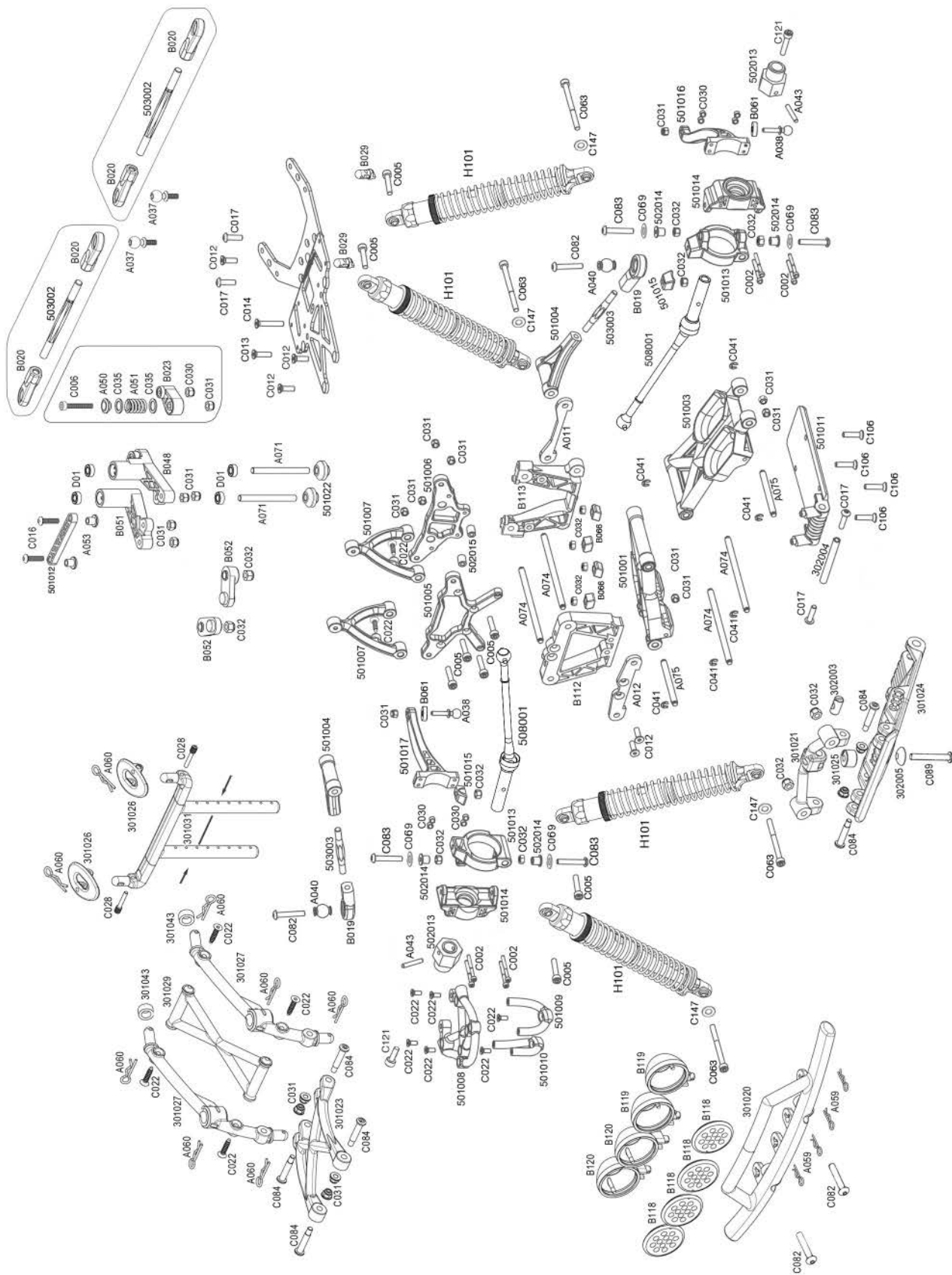
For more details, please see the attached CD.

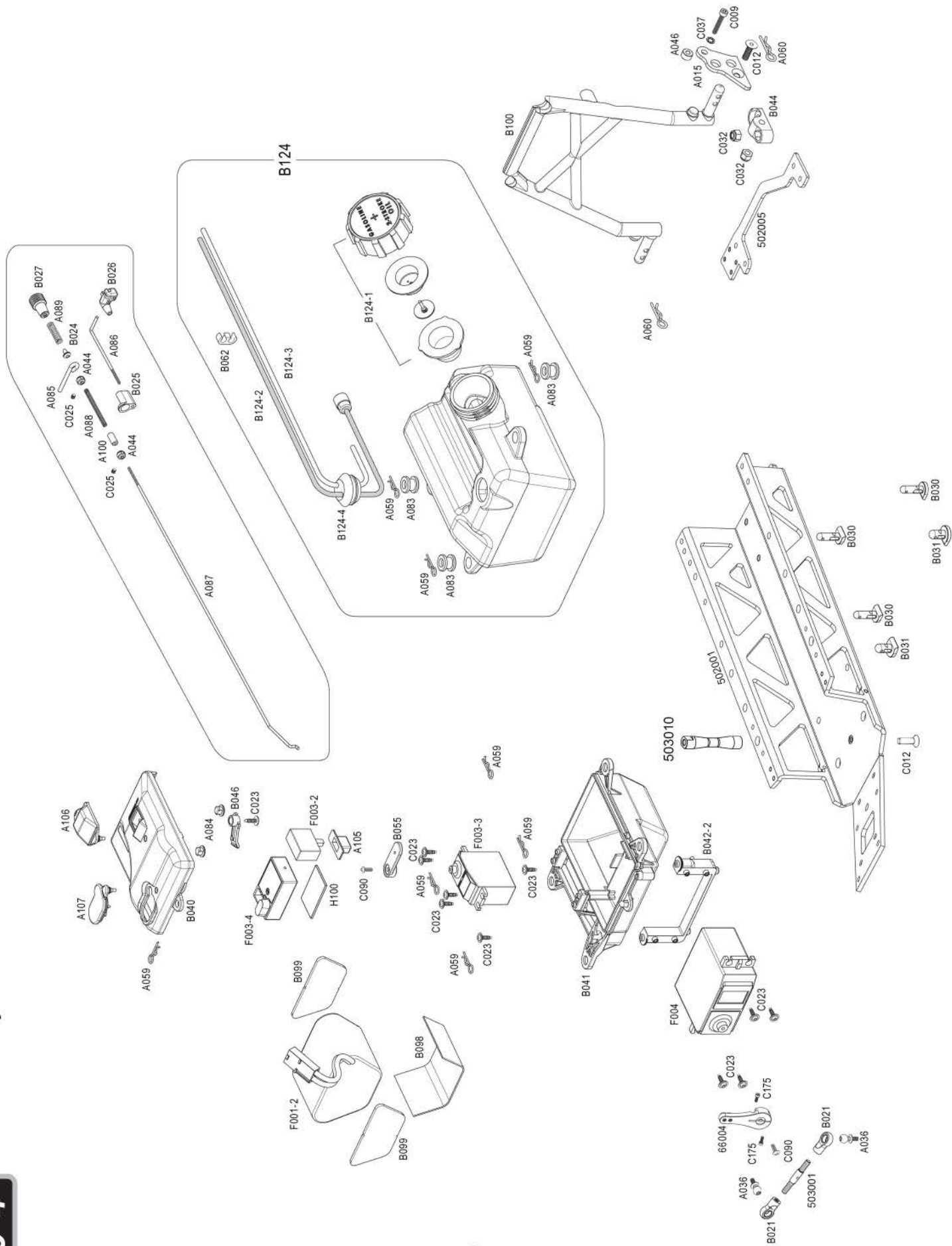
3-1

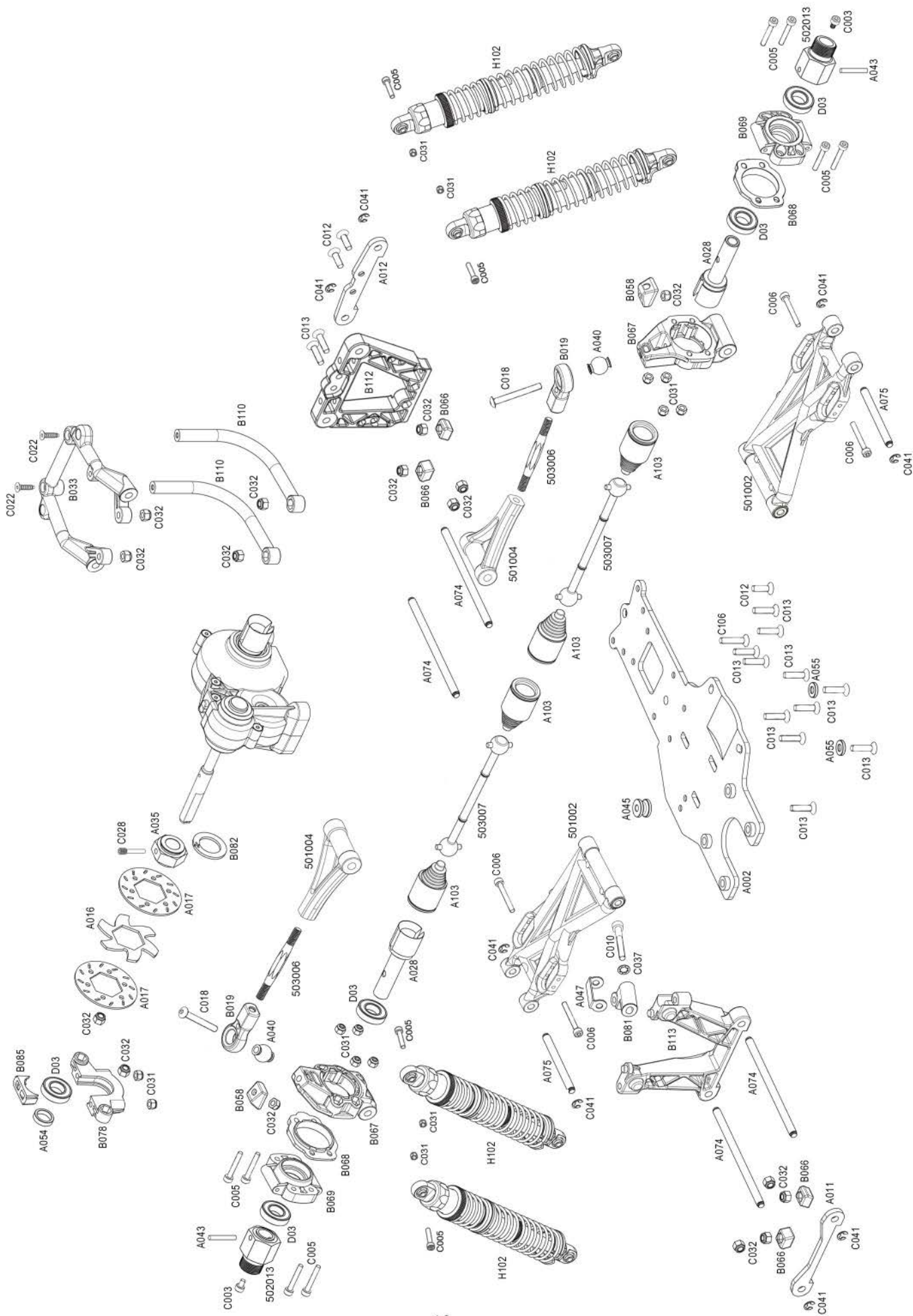




Front Assembly

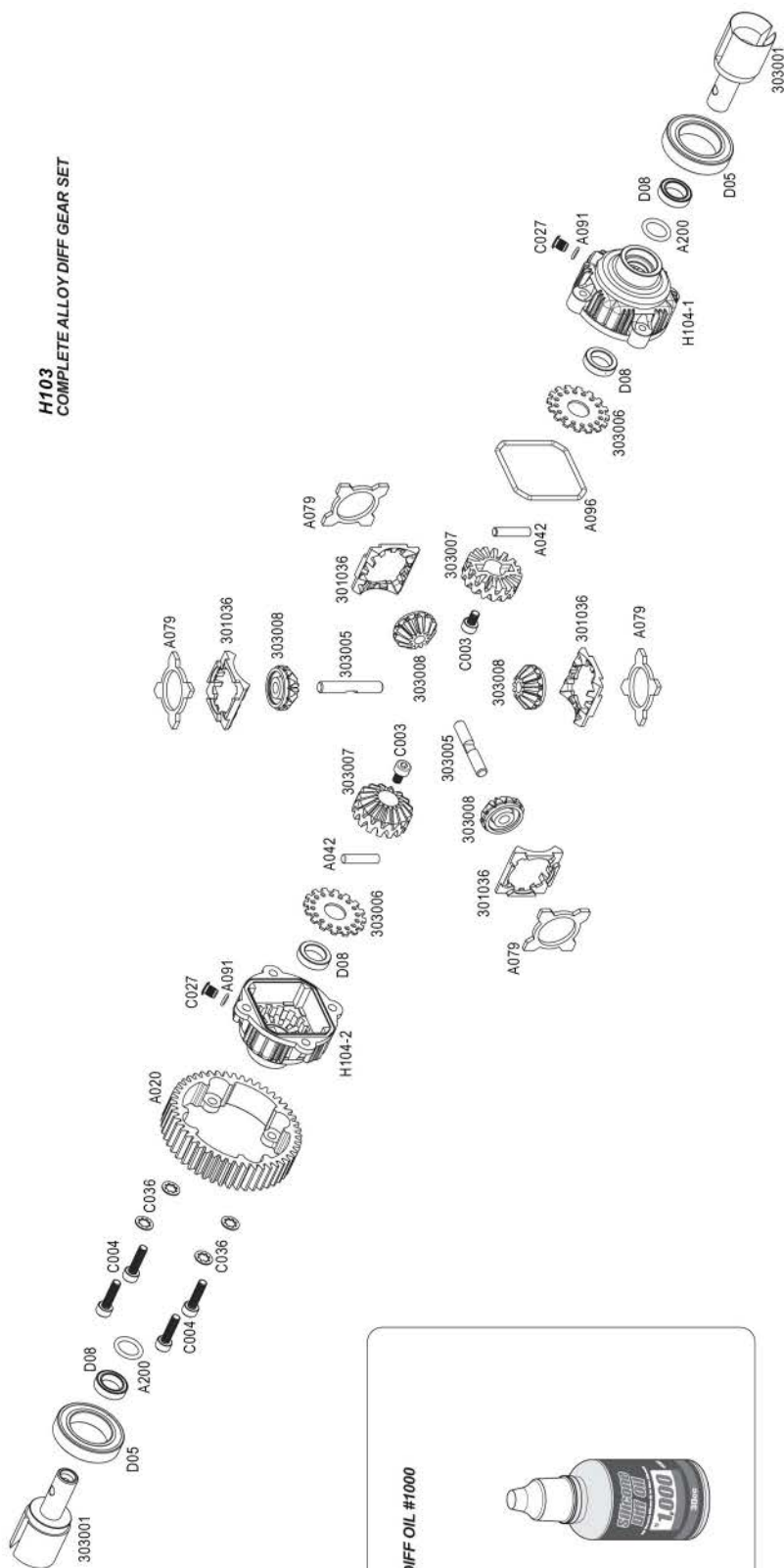




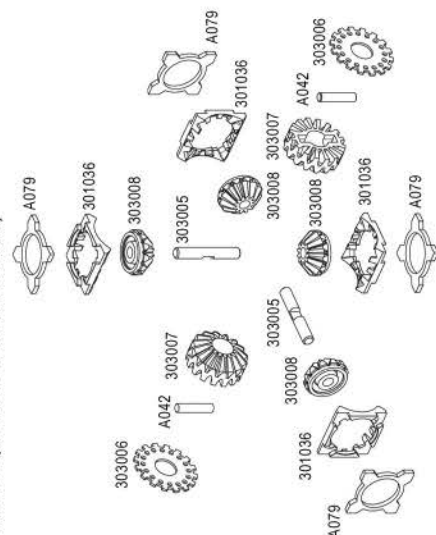




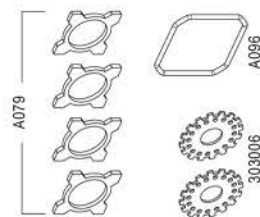
H103 COMPLETE ALLOY DIFF GEAR SET



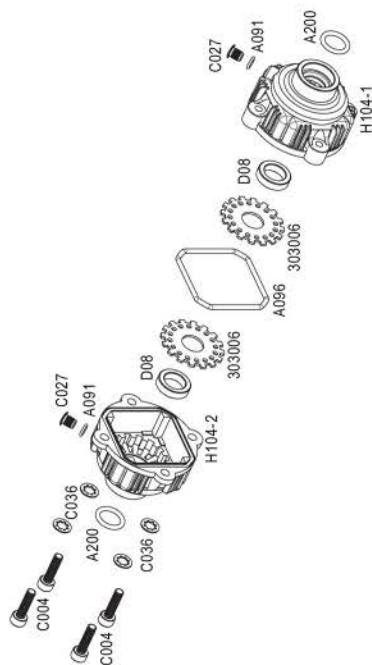
H103-3 BEVEL GEAR SET (for H103-1 ALLOY DIFF CASE SET)

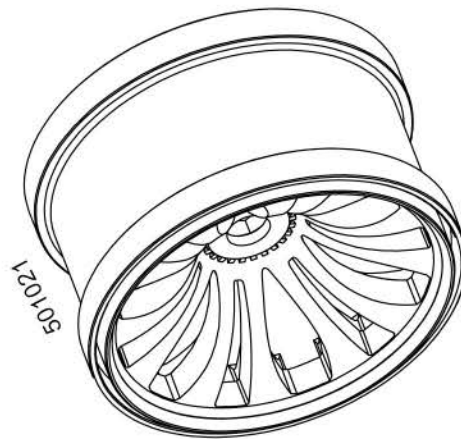
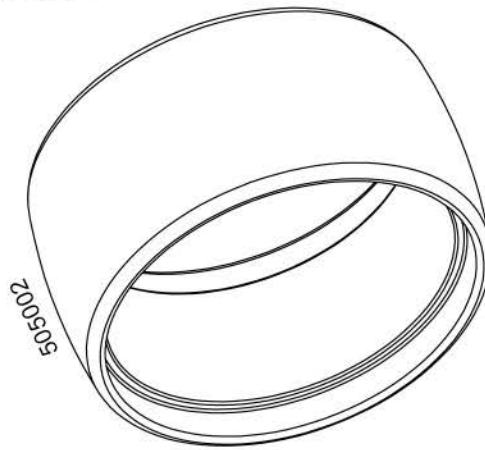


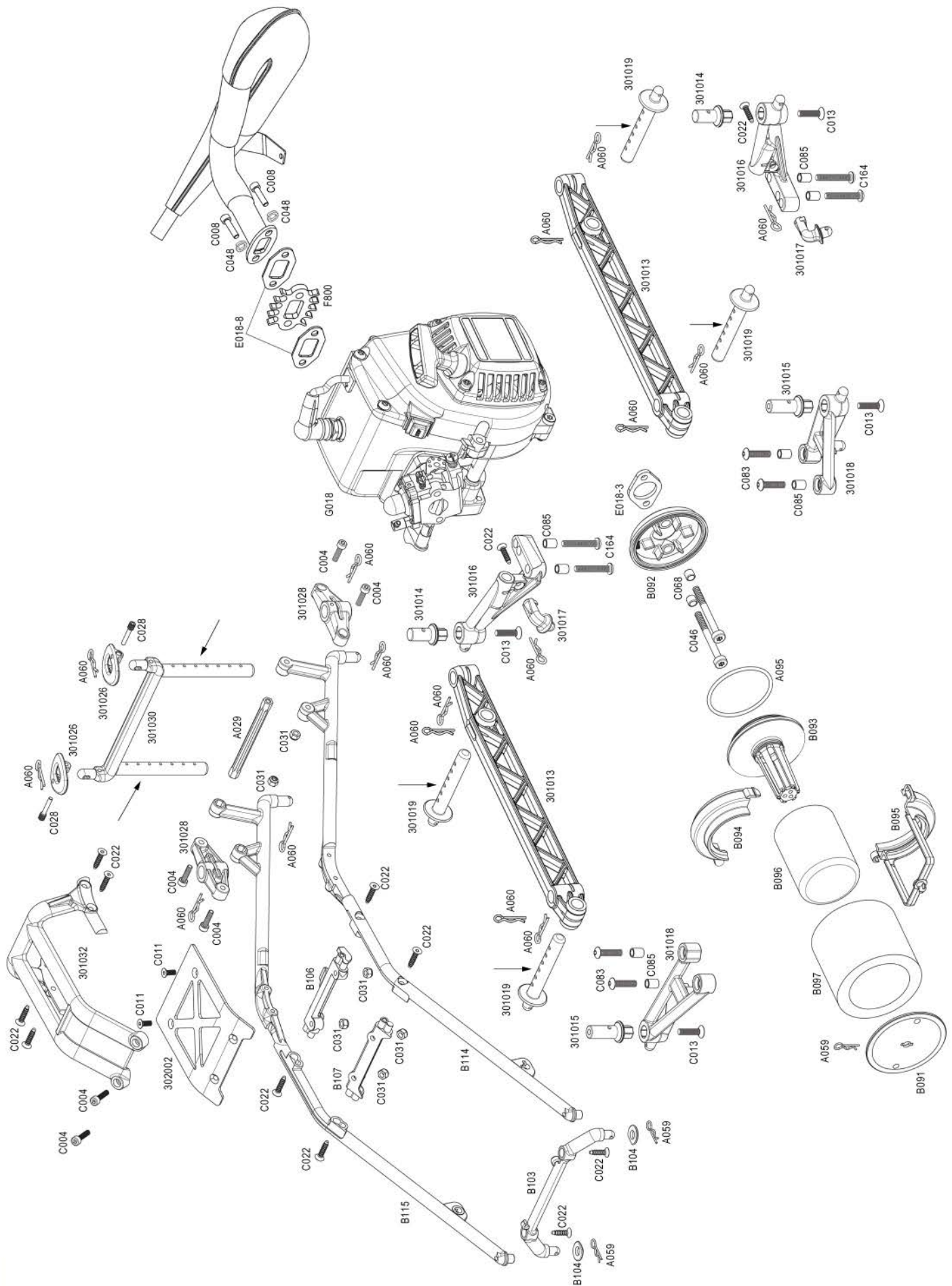
H103-2 DIFF WASHER SET (for H103-1 ALLOY DIFF CASE SET)

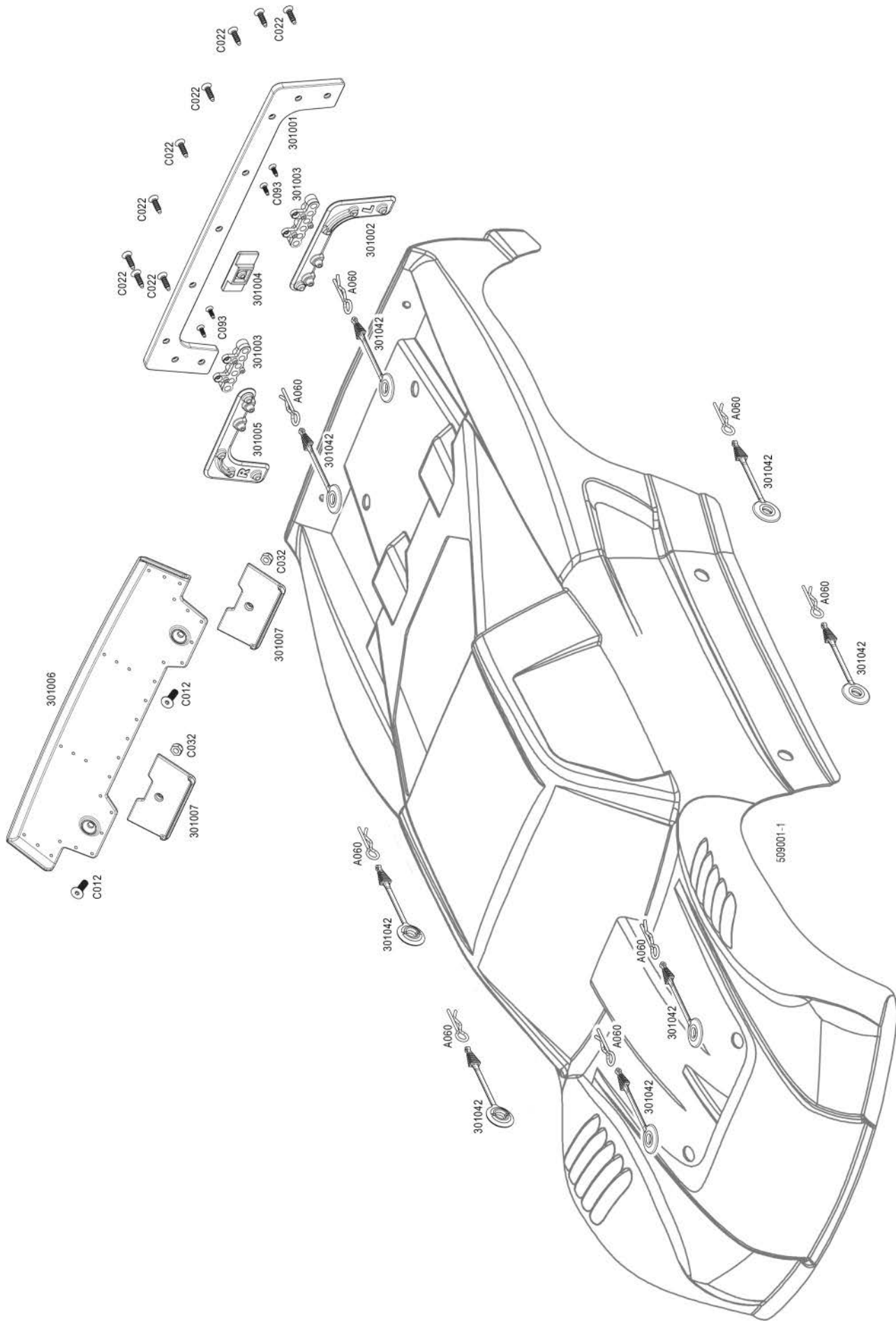


H103-1 ALLOY DIFFERENTIAL CASE SET











雷神运动器械有限公司

嘉善雷神运动器械有限公司 | 嘉兴市嘉善魏塘工业园区振业路55号

Jiashan Kingmotor Sport Technology Co.,Ltd.

No.55 Zhenye rd, Weitang industrial zone, Zhejiang, China 314100

T/86-0573-84639307 / 0573-84639306

E/sales.frederick@kingmotor.cn

www.kingmotor.cn